

QUEEN OF THE HOLY ROSARY PARISH

CAMPAIGN PLANNING STUDY - CASE FOR SUPPORT

Queen of the Holy Rosary Parish is committed to a mission of hospitality, prayer, formation and service to the most vulnerable in our parish, community, and world. Our parish has recently taken a number of steps to ensure we are well positioned to fulfill our mission. One large step forward was the completion of a Parish Visioning process to strengthen our engagement with committed Catholics for generations to come. This process includes the establishment of Visioning Goals and Visioning Projects that will help us to meet these objectives:

Visioning Goals

- Focus on five pastoral priorities, including Conversion, Evangelization, Catholic education, Outreach to those in need, and Stewardship.
- Enhance our Communication and IT (information technology) utilization.
- Empower young people to live as disciples of Jesus Christ and draw them to responsible participation in the life, mission, and work of the Catholic faith community.
- Strengthen the engagement of all adult men and women to actively lead and participate in the full life, fellowship, and mission of the church.
- Make our Mass experience so purposeful that as we build our faith we also maximize the probability that visitors to the church will return.
- Provide the kind of facilities we will need to achieve these goals.

Recognizing that our physical space will play a role in our ability to realize these goals, the Facilities Advisory Group was formed out of the parish-wide strategic planning process as one of the Visioning Teams. The primary goal of the group is to provide well-maintained and safe facilities for the parish mission and ministries through a continual stewardship of facilities effort while thoroughly examining all our grounds and buildings to discern and provide for our current and future needs.

An architectural programming and needs assessment was conducted, which began by taking a full campus wide inventory of all existing rooms and buildings. This included analyzing the square footages, technology, finishes, and electrical/mechanical systems, and also considering the condition and accessibility of each space. The group also coordinated with the other Visioning Team groups to determine the needs that came out of their planning discussions.

The following are the recommendations from this process:

- Create a **flexible ADA accessible meeting space** for 30-50 people, and create several meeting spaces for 15-30 people, with technology and other amenities, to support all of the various church ministries and guest speakers. These spaces should have flexible furnishings and abundant A/V equipment to allow for a variety of orientations and uses for both small and large meetings, seminars, and discussions.

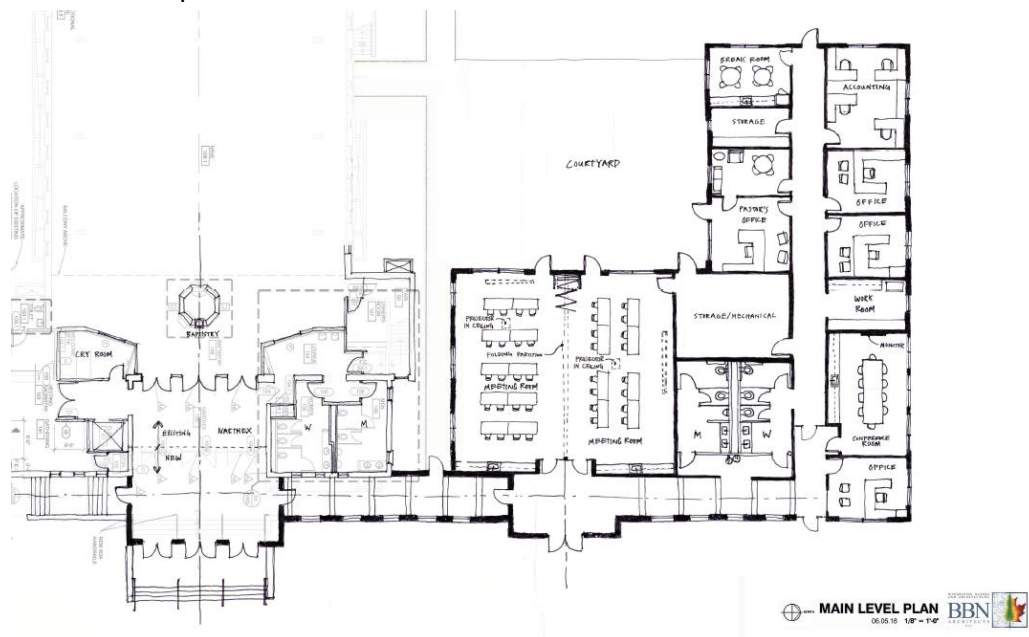
- Create an **enlarged narthex** to provide an additional welcoming space for gathering and greeting outside of the sanctuary. This recommendation came partly after considering the hospitality aspect of the Queen of the Holy Parish Mission Statement: Inspired by the love and compassion of our Mother Mary and united with her Son Jesus in the Eucharist, we say “Fiat” to our commitment to Hospitality, Prayer, Formation and Service to the most vulnerable in our Parish, Community and World.
- Support the goals of **John Paul II Catholic School**, by creating a fund for current and future maintenance needs.

One major consideration of the assessment was whether to renovate and upgrade the existing convent (built in 1953) or the existing rectory (built in 1956). After a study and many discussions, it was determined that major renovations of these buildings would not be feasible due to structural, HVAC, and accessibility restraints.

Potential Capital Improvement Projects

Below are several potential capital improvements project recommendations that came out of many months of deliberation and prayer by the Facilities Advisory Group and Visioning Teams:

- **New Meeting and Office Space-** A new building to the north of the church would provide modern, flexible and accessible meeting rooms with ample daylighting, A/V technology, and storage. An outdoor plaza area with access from the meeting rooms would provide an additional place for meditation and prayer. The entries to the building would be oriented to the east to allow for easy access from the existing accessible parking lot. The exterior building materials are recommended to be brick, masonry, and other materials that would tie in aesthetically to the existing church and other buildings on the complex. This building would also house new parish offices, which would take the place of the existing rectory building. The estimated cost for this new building is **\$2.4 million to \$3 million**, depending largely on the size and number of meeting spaces that would be provided.



- **Expanded Narthex and Church Improvements-** The new building could be connected to the existing church, which would provide easier accessibility to the large meeting rooms and parish offices for all parishioners and visitors. The enlarged narthex would also provide a central gathering area for parishioners. Additionally, an indoor or exterior covered link could be created from the narthex to the new building to the north to allow for easy access to the meeting rooms and parish offices. The estimated cost for the link and new narthex is in the range of **\$350,000 - \$450,000**.
- **Parish Hall Basement Updates-** The existing parish hall basement space could be upgraded and modernized with new finishes, lighting, ceilings, storage cabinets, and A/V technology. The renovation would include adding multiple folding partitions. These would provide flexible meeting spaces with sound separation for small, medium, and large size groups, while also still allowing the space to be opened and utilized for large parish gatherings and meals. It is recommended that the kitchen remain unaltered since it has been renovated fairly recently and is functioning well. The estimated cost for the basement renovation is in the range of **\$800,000 - \$900,000**.



- **John Paul II School Support-** A fundraising campaign could allow our parish to assist John Paul II School by allocating funding to replace the boiler and the exterior stairwell, two needs will need to be addressed in the near future. These projects are estimated to cost **\$75,000 - \$130,000**.

Total Estimated Cost: \$3,250,000 - \$4,480,000

ONE FAITH, ONE FAMILY, ONE FUTURE IN CHRIST

Our Archdiocese has recently embarked on a comprehensive fundraising campaign, entitled *One Faith, One Family, One Future in Christ*, (*One Faith*) with a goal of providing financial support for:

- Parishes and parish schools
- A culture of evangelization throughout our Archdiocese
- Retired priests
- Villa St. Francis Skilled Nursing Facility
- Savior Pastoral Center

Every parish in the Archdiocese of Kansas City in Kansas, including Queen of the Holy Rosary, will participate in this effort. Please visit faithfamilyfuture.archkck.org for more information.

PARISH CAMPAIGN PLANNING STUDY

Due to our extraordinary parish needs, Queen of the Holy Rosary has the opportunity to pursue the possibility of conducting a “combined campaign,” when we would secure funding for our parish plans and fulfill our commitment to *One Faith*. In order to determine our path forward, our parish is embarking on a parish campaign planning study to discuss the specifics of a combined campaign arrangement with our parish community.

The key factors in determining whether it makes sense for our parish to conduct a combined campaign are:

1. The level of parishioner support for the proposed parish projects
2. Our estimated fundraising potential

If we are able to fund a substantial number of our parish projects and fulfill our \$1.1 million parish commitment to the *One Faith* campaign, then it would be advisable for us to pursue a combined campaign, during which all Queen of the Holy Rosary parishioners would be asked to consider one sacrificial gift, payable for up to a three-to-five-year period, to meet both of these needs.

Parishes that conduct a combined campaign share campaign gifts equally with the *One Faith* campaign; and once the parish commitment is met, the parish then receives 100% of the gifts received above that commitment amount.

Your feedback is essential to informing how best to proceed with this important opportunity.